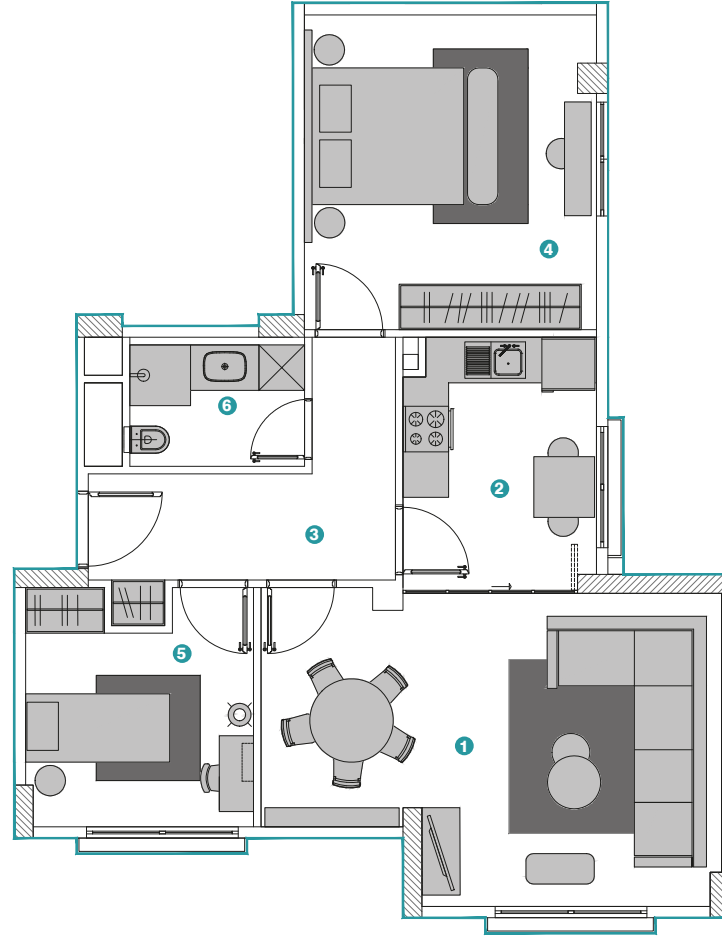


DAİRE PLANLARI

2+1 B1

1 Salon	22,72 m ²
2 Mutfak	8,38 m ²
3 Anire	8 m ²
4 Ebeveyn Yatak Odası	15,87 m ²
5 Yatak Odası/Oturma Odası	8,87 m ²
6 Banyo+WC	3,68 m ²

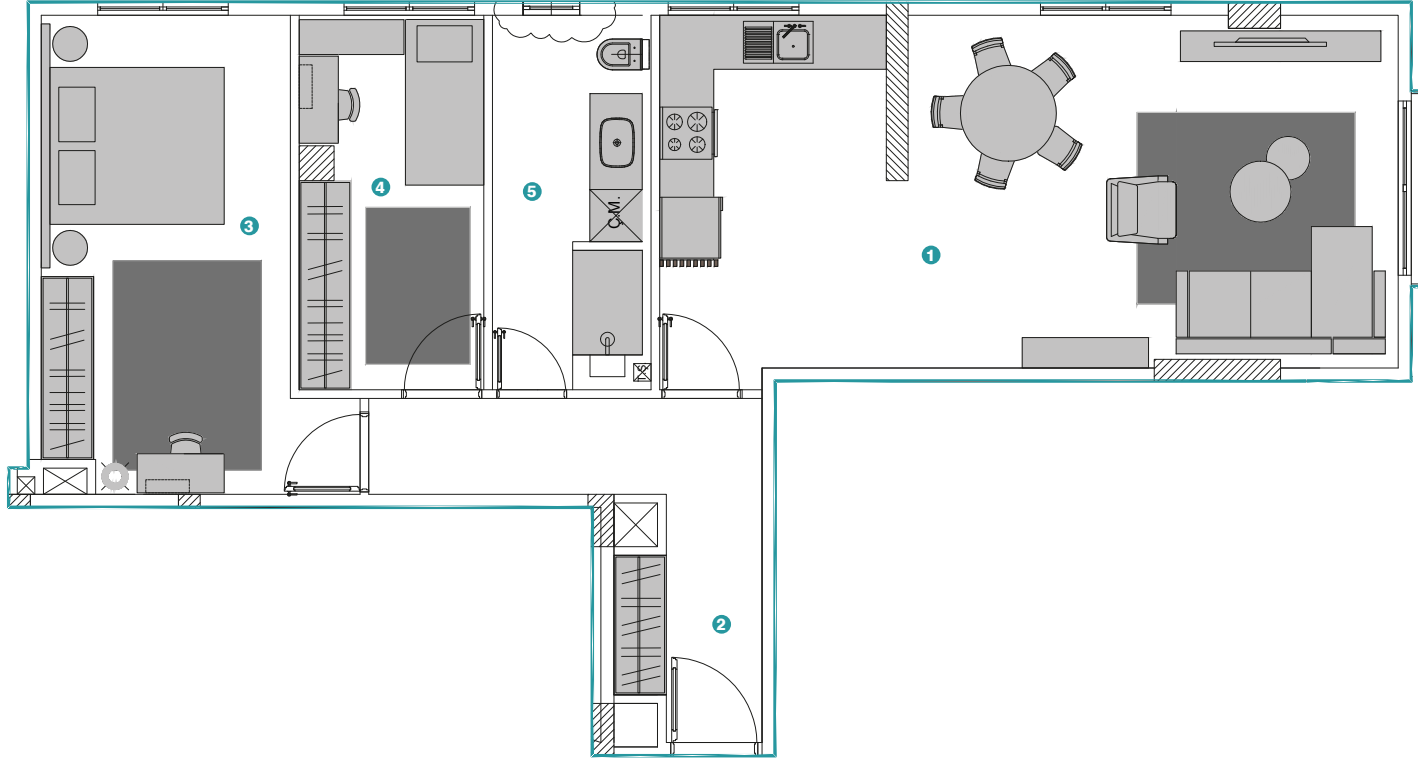
NET ALAN	67,52 m ²
BRÜT ALAN	101,28 m ²



2+1_L

1 Salon+Mutfak	33,91 m ²
2 Antre	9,41 m ²
3 Ebeveyn Yatak Odası	16,36 m ²
4 Yatak Odası	9 m ²
5 Banyo+WC	7 m ²

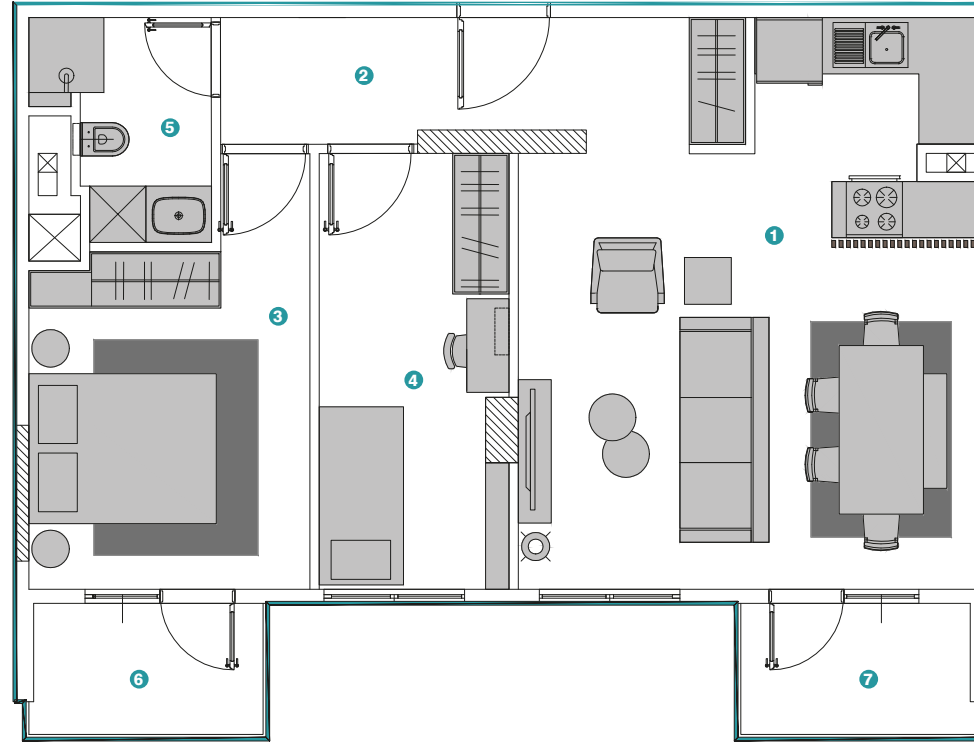
NET ALAN	75,68 m ²
BRÜT ALAN	113,52 m ²



2+1_T

1 Salon+Mutfak	25,83 m ²
2 Antr	7,67 m ²
3 Ebeveyn Yatak Odası	11,67 m ²
4 Yatak Odası	9,24 m ²
5 Banyo+WC	3,8 m ²
6 Balkon	3,44 m ²
7 Balkon	3,44 m ²

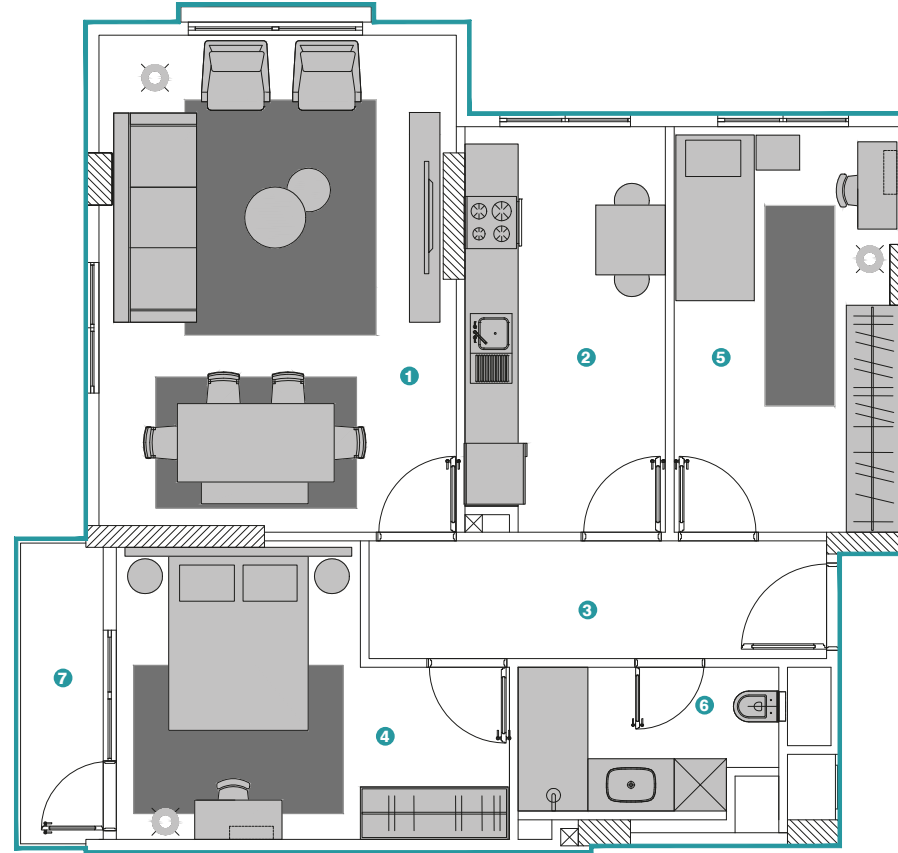
NET ALAN	65,09 m ²
BRÜT ALAN	97,64 m ²



2+1_N

1 Salon	22,93 m ²
2 Mutfak	10,51 m ²
3 Antre	7,52 m ²
4 Ebeveyn Yatak Odası	12,84 m ²
5 Yatak Odası	11,91 m ²
6 Banyo+WC	4,63 m ²
7 Balkon	3,25 m ²

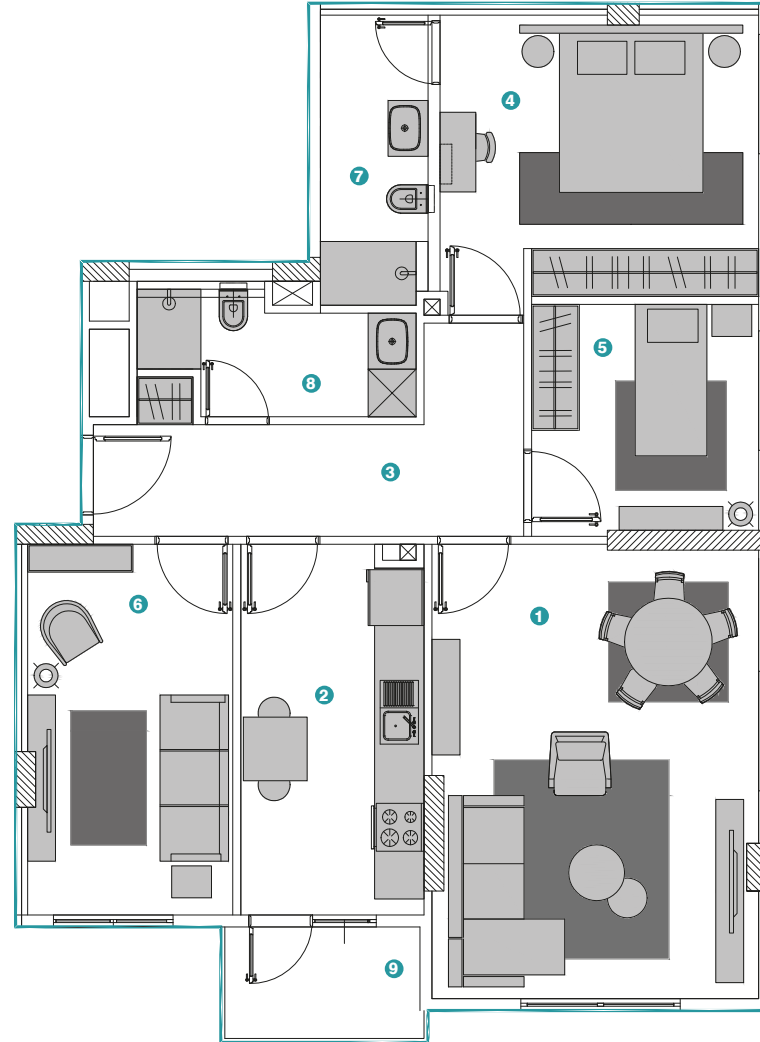
NET ALAN	73,59 m ²
BRÜT ALAN	110,39 m ²



3+1A

1 Salon	23 m ²
2 Mutfak	10,51 m ²
3 Antra	10,1 m ²
4 Ebeveyn Yatak Odası	14,34 m ²
5 Yatak Odası	8,15 m ²
6 Oturma Odası	12 m ²
7 Ebeveyn Banyo+WC	4,8 m ²
8 Banyo+WC	4,55 m ²
9 Balkon	3,44 m ²

NET ALAN	90,91 m ²
BRÜT ALAN	123 m ²



3+1_B

1 Salon	23 m ²
2 Mutfak	10,5 m ²
3 Antre	9,7 m ²
4 Ebeveyn Yatak Odası	14,70 m ²
5 Yatak Odası	8 m ²
6 Oturma Odası	12 m ²
7 Ebeveyn Banyo+WC	4,38 m ²
8 Banyo+WC	4,6 m ²
9 Balkon	3,52 m ²

NET ALAN	90,60 m ²
BRÜT ALAN	122,00 m ²

